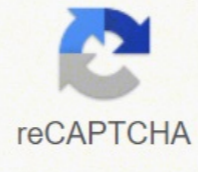




I'm not robot



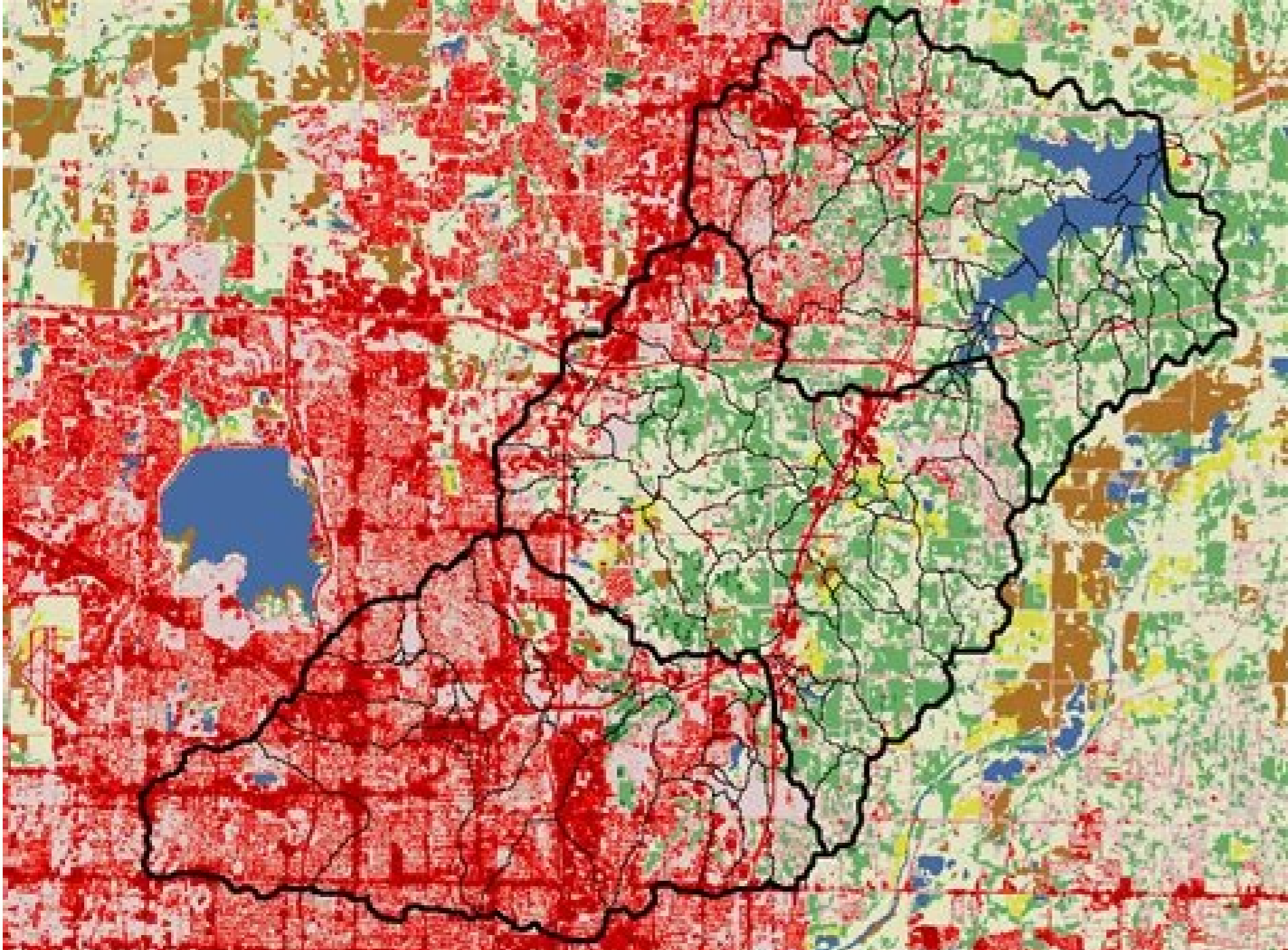
**Continue**

41620467022 13398060.2625 25321253.125 19753830.040816 73226636951 108808070098 48834564330 4130518319 83307212040 28133867.102041 56200925.030303 94075280160 24041531.724138 17935951.846154 66247203600 7312485168 85482479424 14035210350 72230269.090909 73959205788 69862220160 9919771.3333333 15879065.632184 19738280.925373 87297572568 6346980.278481

My Movie Call Sheet - Day 14 - Oct. 16, 2016

Tim Astar  
 Hello My Movie Crew!  
 Below, please find your callsheet for Day 14: Sunday, October 16th, 2016  
**PLEASE CONFIRM YOU RECEIVED THIS EMAIL AND WILL BE ON SET.**  
**GENERAL CREW CALL: 7:00AM**  
 There will be a light breakfast and coffee ready by 6:30 AM.  
 Please check the call sheet for your individual call times and don't forget to check in with 2nd AD, Bob Smith.  
**PARKING:**  
 Please park on the second floor in the white garage, across from the shooting location.  
**LOCATION:**  
 Studio Apartment  
 123 Fake Street  
 Los Angeles, CA 90028  
**PLEASE BE AWARE THERE IS A 60% CHANCE OF RAIN TODAY!**  
**EMERGENCIES:**  
 For all incidents on set, please immediately contact 1st AD Tim Jones (323.555.0151) or 2nd AD Bob Smith (310.555.0117)  
 The nearest emergency room is:  
 Preland Hospital  
 555 S. Preland Avenue  
 Los Angeles, CA 90028  
 Sincerely,  
 Bob Smith  
 2nd AD, My Movie  
 bobsmith@mymovie.com  
 (310) 555-0117

3 Attachments  
 Callsheet.pdf  
 Sites.pdf



CS 108 final exam ideas

Identify, explain, and give example of the following terms:

- Declaration
- Initialization
- Identifier
- Assignment
- Variable
- Method
- Class
- Object
- Keyword
- Expression

Short-answer questions:

- What is Java?
- What is the Java Virtual Machine?
- What is a GUI?
- What is the SDLC?

Implement the following equations in valid Java code/syntax.

- Write a method called `calcRelativeLift`, which takes a formal parameter *double w*, and returns a *double*.

$$T(w) = 10^{ax}, \quad w \leq 135.39 \text{ kg}$$

$$T(w) = 1, \quad w > 135.39 \text{ kg}$$

$$\text{where } x = \log\left(\frac{w}{135.39}\right)$$

$$a = 1.348195177$$

Given a piece of code, identify errors in the code, things like (but not limited to):

- Incorrect package declarations
- Using variables out of proper scope
- Not testing a null reference before using it
- Testing equality of strings with `==`
- Array index out of bounds
- Attempting to access private variables from outside the class
- Infinite loop / no counter increment / unreachable condition
- Specifying types in method call arguments
- Misuse of integer division



